



aksa POWER
GENERATION

Aksa Generator Sets-60Hz

Aksa Power Generation (China) Co., Ltd

Add: No.19 Tongjiang North Road,Changzhou New District, Changzhou / China

Tel: +86(0)519 8515 0205

Web: www.aksapowergen.com

Version 202512

AKSA reserves the right of final interpretation for all contents

Please contact AKSA for product details and the latest configurations



Official Website

KAZANCI HOLDING

KAZANCI HOLDING

Aksa is headquartered in Istanbul and belongs to the Kazanci Holding Group, which has a 60-year history and is renowned in Europe.

Aksa's business primarily covers power generation, energy, natural gas, electricity, agriculture and tourism. Aksa has approximately 15,000 employees worldwide and its global revenue reached 6.8 billion dollars.

Global leading brand

Production bases located on three continents

Sell to 178 countries



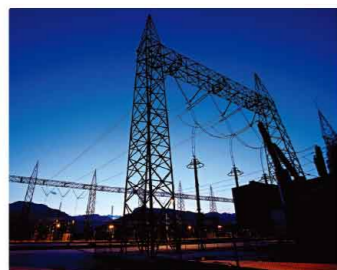
AKSA POWER GENERATION



AKSA ENERGY



AKSA NATURAL GAS



AKSA ELECTRICITY



AKSA AGRICULTURE



AKSA TOURISM

AKSA POWER GENERATION GLOBAL BUSINESS



AKSA CHINA



AKSA TURKEY



AKSA USA



AKSA SPAIN

Aksa Power Generation has nearly half a century of experience and expertise in the global research & development, production, and after-sales service of generator sets, establishing itself as one of the world's leading generator brands.

With four production bases in China, Turkey, the USA, Spain, Aksa Power Generation manufactures diesel, gasoline, and natural gas generators, as well as lighting towers and marine generators, covering a power range from 1 kW to 2,750 kW. The company offers generator leasing services and power system integration for both temporary and permanent power stations, along with customized solutions for data centers and other industries. Aksa Power Generation holds international ISO certifications and complies with the most stringent product standards in regions including the EU, CIS, Africa, and China.

Aksa Power Generation has established wholly owned sales and service centers in key global markets, such as Turkey, China, Dubai, Singapore, Kazakhstan, Vietnam, and Algeria. Through a network of nearly 100 distribution centers, the company delivers high-quality products, services, and solutions to customers in 178 countries and regions worldwide.



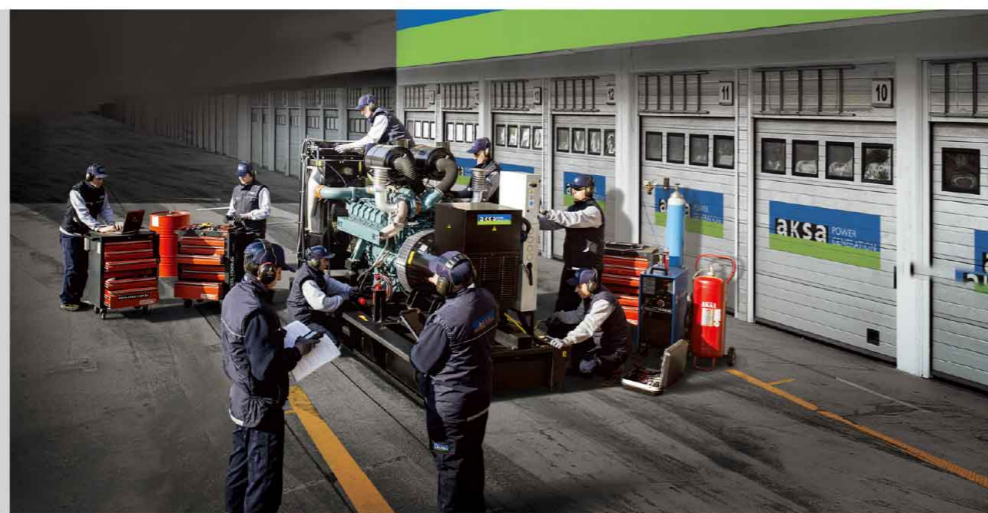
AKSA GLOBAL SALES AND SERVICE SYSTEM



100+
Sales and Service
Centers



7 Days / 24 Hours
Response



A WORLD'S LEADING GENERATOR SETS BRAND

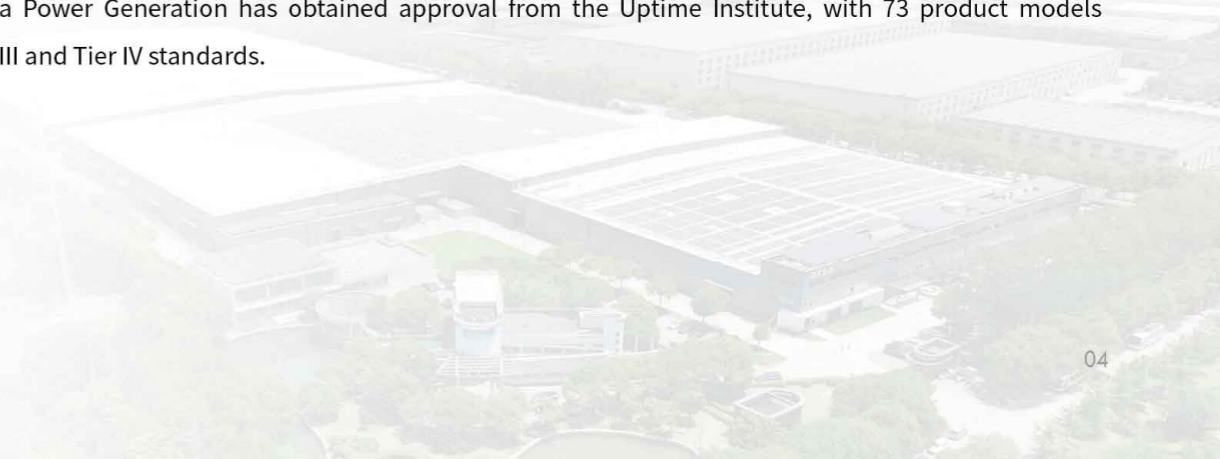


With this strong foundation, Akxa Power Generation delivers worldwide power solutions and ranks among the leading generator set brands in the industry.

In 2007, Akxa Power Generation invested in Changzhou, China, specializing in the production, research and development of generator sets and accessories. The company launched Phase I of its new production base in 2012 and expanded with Phase II in 2017. In 2025, it achieved another milestone as a solar photovoltaic project was successfully connected to the grid, providing clean electricity for operations of the production base while supporting energy conservation and emission reduction initiatives.

The base covers an area of 120,000 square meters, with an annual production capacity of 24,000 units. It has 16 modern testing rooms equipped with fully computerized control platforms, with a testing capacity of 25 MW. Currently, Akxa Power Generation has become one of the world's largest manufacturers of generator sets.

Akxa Power Generation provides the most effective solutions for the data center industry, continuously improving designs, products, and infrastructure to deliver the highest level of reliability for emergency power systems. While serving hundreds of countries worldwide, Akxa products and designs meet the needs of data center users. For data center power systems, Akxa Power Generation has obtained approval from the Uptime Institute, with 73 product models complying with Tier III and Tier IV standards.



AKSA POWER GENERATION ASIA PACIFIC PRODUCTION BASE

The production base is equipped with advanced production lines, panel workshop, and sheet metal workshop. As well as the latest global testing equipment, the total testing capacity can reach 25MW.



Production base view



Warehouse



Production line

Area
120,000 m²

Annual capacity
24,000 units



Testing room



Sheet metal workshop



Panel workshop



Aksa Power Generation A Series Generator Sets

60Hz, 1800rpm, 0.8PF

Genset Model	Engine Model	Controller	Genset Power				Open Genset		Canopy Genset	
			Standby (kVA)	Prime (kVA)	Standby (kW)	Prime (kW)	Dimension (L×W×H)(mm)	Weight (kg)	Dimension (L×W×H)(mm)	Weight (kg)
APD13A-6	A3CRX15	DSE6120	12.4	11.4	9.9	9.1	1400×760×864	370	1522×823×1127	540
APD15A-6	A4CRX19	DSE6120	15	13.6	12	10.9	1400×760×912	385	1672×823×1127	570
APD20A-6*	A4CRX21	DSE6120	20	18.2	16	14.6	1400×760×912	405	1672×823×1127	535
APD28A-6	A4CRX27	DSE6120	28	25.4	22.4	20.3	1696×892×1003	635	1980×950×1200	810
APD35A-6	A4CRX36	DSE6120	35	32	28	25.6	1696×892×1028	700	1980×950×1200	830
APD45A-6	A4CRX37	DSE6120	45	41	36	32.8	1840×892×1119	720	2094×950×1359	920
APD55A-6	A4CRX36T	DSE6120	55	50	44	40	2015×950×1315	960	2282×1008×1532	1070
APD75A-6	A4CRX36TI	DSE6120	75	70	60	56	2015×950×1315	1050	2282×1008×1532	1220
APD100A-6	A4CRX46TI	DSE6120	100	90	80	72	2168×1004×1390	1200	2390×1058×1681	1410
APD140A-6	A6CRX65TI	DSE6120	140	125	112	100	2641×1100×1602	1550	3265×1163×1858	1940
APD200A-6	A6CRX71TI	DSE6120	200	182	160	145.6	2641×1100×1556	1770	3276×1156×1858	2210
APD250A-6	A6CRX97TI	DSE7320	250	230	200	184	2900×1400×2045	2545	3918×1463×2163	2980

The standby/prime power is 19/17.3 kVA under 380/220V*.
Dimension & Weight are suitable for 220/127V genset, Please contact AKSA for data under other voltages if needed.
Standby power (ESP) and Prime power (PRP) Ratings are in accordance with ISO8528-1.
Please contact Aksa for product details and the latest configurations.



**Aksa Power Generation
C Series Generator Sets**

60Hz, 1800rpm, 0.8PF

Genset Model	Engine Model	Controller	Genset Power				Open Genset		Canopy Genset	
			Standby (kVA)	Prime (kVA)	Standby (kW)	Prime (kW)	Dimension (L×W×H)(mm)	Weight (kg)	Dimension (L×W×H)(mm)	Weight (kg)
APD26C-6	4B3.9-G11	DSE6120	26	23	20.8	18.4	2015×950×1384	800	2282×1008×1532	1020
APD35C-6	4B3.9-G2	DSE6120	35	32	28	25.6	2015×950×1411	810	2282×1008×1532	1030
APD50C-6	4BT3.9-G2	DSE6120	50	45	40	36	2015×950×1411	900	2282×1008×1532	1120
APD75C-6	4BTA3.9-G2	DSE6120	75	67	60	53.6	2015×950×1411	1010	2282×1008×1532	1230
APD100C-6	4BTA3.9-G11	DSE6120	100	90	80	72	2015×950×1420	1000	2282×1008×1532	1300
APD125C-6	6BT5.9-G2	DSE6120	125	110	100	88	2348×1004×1409	1230	2600×1058×1681	1480
APD165C-6	6BTAA5.9-G2	DSE6120	165	150	132	120	2350×1080×1701	1310	3417×1136×2022	1780
APD184C-6	6BTAA5.9-G12	DSE6120	184	167	147.2	133.6	2367×1080×1731	1335	3417×1136×2022	1840
APD220C-6	6CTA8.3-G2	DSE7320	220	200	176	160	2336×1080×1742	1570	3417×1136×2022	2090
APD250C-6	6CTAA8.3-G2	DSE7320	250	225	200	180	2750×1300×1734	2300	3963×1356×2171	2930
APD300C-6	6LTAA8.9-G2	DSE7320	300	275	240	220	2750×1300×1734	2370	3963×1356×2171	3000
APD320C-6	6LTAA9.5-G3	DSE7320	320	285	256	228	2750×1300×1845	2450	3963×1356×2171	3100
APD344C-6	6LTAA9.5-G1	DSE7320	344	312.5	275.2	250	2840×1300×1845	2660	3963×1356×2171	3320
APD425C-6	6ZTAA13-G3	DSE7320	425	386	340	308.8	3104×1550×2181	3210	4463×1606×2559	4110
APD440CE-6	QSZ13-G6	DSE7320	440	400	352	320	3014×1550×2291	3150	4463×1606×2559	4050
APD500C-6	6ZTAA13-G2	DSE7320	500	455	400	364	3104×1550×2181	3631	4463×1606×2559	4500
APD500CE-6	QSZ13-G7	DSE7320	500	450	400	360	3104×1550×2291	3550	4463×1606×2559	4420
APD501C-6	QSZ13-G2	DSE7320	500	450	400	360	3104×1550×2181	3676	4463×1606×2559	4546
APD550C-6	QSZ13-G3	DSE7320	550	500	440	400	3180×1550×2181	3400	4463×1606×2559	4520
APD625C-6	QSZ13-G11	DSE7320	625	568	500	454.4	3260×1550×2148	3480	5813×1606×2652	5200

Dimension & Weight are suitable for 220/127V genset, Please contact AKSA for data under other voltages if needed.
Standby power (ESP) and Prime power (PRP) Ratings are in accordance with ISO8528-1.
Please contact Aksa for product details and the latest configurations.

**Aksa Power Generation
C Series Generator Sets**

60Hz, 1800rpm, 0.8PF

Genset Model	Engine Model	Controller	Genset Power				Open Genset		Canopy Genset	
			Standby (kVA)	Prime (kVA)	Standby (kW)	Prime (kW)	Dimension (L×W×H)(mm)	Weight (kg)	Dimension (L×W×H)(mm)	Weight (kg)
AC625-6*	QSX15-G9	DSE7320	625	563	500	450.4	3296×1550×2103	3770	5813×1606×2652	5500
AC754-6*	VTA28-G5	DSE7320	754	680	603.2	544	3668×1550×2254	5750	5813×1606×2652	7000
AC1000-6*	QSK23-G3	DSE7320	1000	905	800	724	4124×1911×2261	6500	6502×2294×2353	8800
AC1266-6*	KTA38-G14	DSE7320	1265	1150	1012	920	4378×2060×2162	8300	7528×2302×2506	11800
AC1265-6*	QST30-G4	DSE7320	1265	1150	1012	920	4250×1950×2217	7100	7528×2302×2506	10700
AC1600-6**	KTA50-G3	DSE7320	1588	1400	1270.4	1120	4916×1800×2254	9400	9037×2272×3135	14200
AC1930-6**	KTA50-G9	DSE7320	1930	1610	1544	1288	5770×2100×2530	10670	9037×2272×3335	14950
AC2540-6**	QSK60-G6	DSE7320	2500	2281	2000	1824.8	5960×2250×2950	14200	9037×2843×4374	19000
AC3438-6**	QSK78-G8	DSE7320	3438	3125	2750	2500	7984×3260×3647	20500	11000×2800×5135	26000

Dimension & Weight are suitable for 220/127V genset, Please contact AKSA for data under other voltages if needed*.
Not available at 220/127V voltage**.
Standby power (ESP) and Prime power (PRP) Ratings are in accordance with ISO8528-1.
Please contact Aksa for product details and the latest configurations.

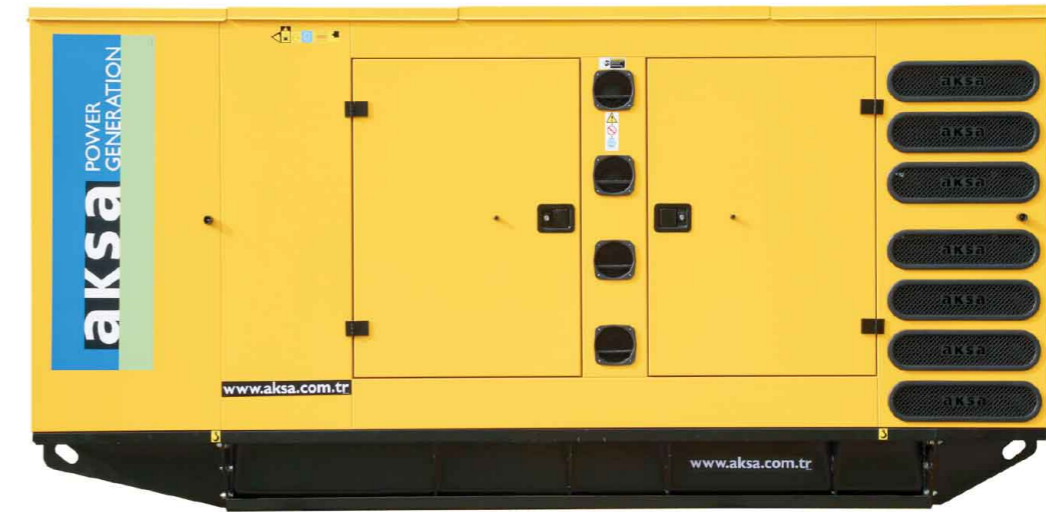


**Aksa Power Generation
M Series Generator Sets**

60Hz, 1800rpm, 0.8PF

Genset Model	Engine Model	Controller	Genset Power				Open Genset		Canopy Genset	
			Standby (kVA)	Prime (kVA)	Standby (kW)	Prime (kW)	Dimension (L×W×H)(mm)	Weight (kg)	Dimension (L×W×H)(mm)	Weight (kg)
APD1255M-6*	S12H-PTA	DSE7320	1255	1140	1004	912	4380×1880×2298	8180	7522×2302×3517	12000
APD1500M-6**	S12R-PTA	DSE7320	1500	1363	1200	1090.4	4390×2040×2218	9330	7500×2300×3893	13000
APD1688M-6**	S12R-PTA2	DSE7320	1688	1535	1350.4	1228	4442×2040×2217	9640	7500×2300×3893	13500
APD1860M-6**	S12R-PTAA2	DSE7320	1860	1690	1488	1352	5126×2442×3022	11100	9000×2800×4394	15000
APD2000M-6**	S16R-PTA	DSE7320	2000	1815	1600	1452	5294×2485×2573	12100	9000×2800×4394	16000
APD2250M-6**	S16R-PTA2	DSE7320	2250	2045	1800	1636	5364×2483×2961	13000	9000×2800×4394	16500
APD2500M-6**	S16R-PTAA2	DSE7320	2500	2275	2000	1820	5814×2192×3390	13450	9000×2800×4690	17000

Dimension & Weight are suitable for 220/127V genset, Please contact AKSA for data under other voltages if needed*.
Not available at 220/127V voltage**.
Standby power (ESP) and Prime power (PRP) Ratings are in accordance with ISO8528-1.
Please contact Aksa for product details and the latest configurations.

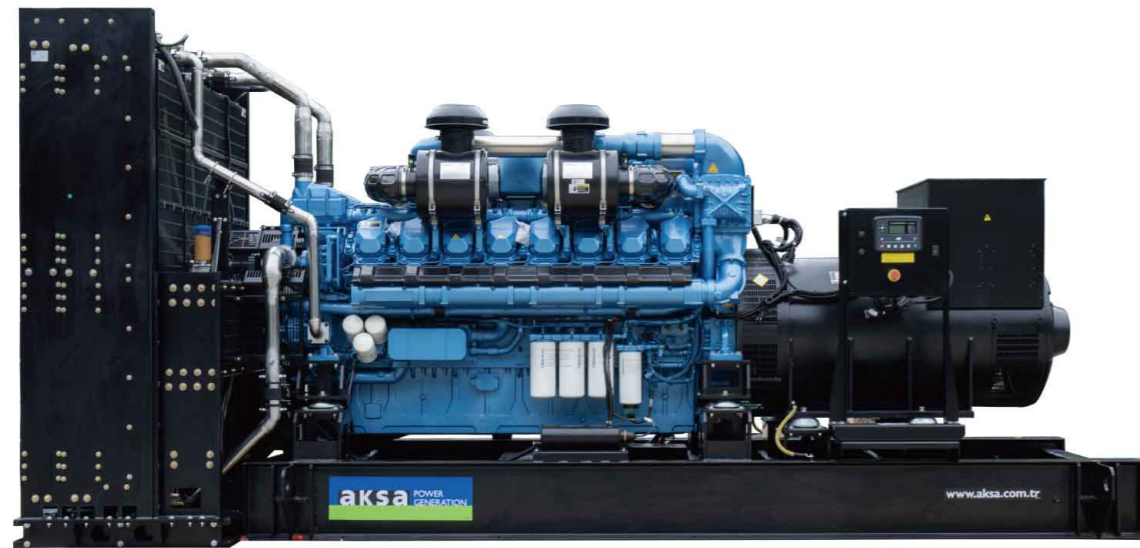


**Aksa Power Generation
D Series Generator Sets**

60Hz, 1800rpm, 0.8PF

Genset Model	Engine Model	Controller	Genset Power				Open Genset		Canopy Genset	
			Standby (kVA)	Prime (kVA)	Standby (kW)	Prime (kW)	Dimension (L×W×H)(mm)	Weight (kg)	Dimension (L×W×H)(mm)	Weight (kg)
AD209-6	P086TI-1	DSE7320	209	190	167.2	152	2523×1150×1775	1740	3417×1206×2022	2490
AD250-6	P086TI	DSE7320	250	229	200	183.2	2573×1150×1775	2020	3417×1206×2022	2590
AD330-6	P126TI	DSE7320	330	300	264	240	2847×1300×1661	2170	3963×1356×2171	3200
AD385-6	P126TI-II	DSE7320	385	343.8	308	275	2948×1300×1661	2256	3963×1356×2171	3330
AD440-6	DP126LB	DSE7320	440	400	352	320	2992×1550×1912	2930	4463×1606×2559	3644
AD510-6	P158LE	DSE7320	510	445	408	356	3035×1550×2062	2973	4463×1606×2559	3787
AD575-6	DP158LC	DSE7320	575	520	460	416	3035×1550×2060	3253	4463×1606×2559	4230
AD630-6	DP158LD	DSE7320	630	568.8	504	455	3035×1550×2060	3450	5813×1606×2652	4620
AD700-6	DP180LA	DSE7320	700	635	560	508	3205×1550×2048	3500	5813×1606×2652	5210
AD750-6	DP180LB	DSE7320	750	685	600	548	3205×1550×2048	3560	5813×1606×2652	5480
AD880-6	DP222LB	DSE7320	880	800	704	640	4500×1550×2302	4725	5813×1606×2652	5820
AD935-6	DP222LC	DSE7320	935	850	748	680	4500×1550×2302	4725	5813×1606×2652	5940

Dimension & Weight are suitable for 220/127V genset, Please contact AKSA for data under other voltages if needed.
Standby power (ESP) and Prime power (PRP) Ratings are in accordance with ISO8528-1.
Please contact Aksa for product details and the latest configurations.



**Aksa Power Generation
BD Series Generator Sets**

60Hz, 1800rpm, 0.8PF

Genset Model	Engine Model	Controller	Genset Power				Open Genset		Canopy Genset	
			Standby (kVA)	Prime (kVA)	Standby (kW)	Prime (kW)	Dimension (L×W×H)(mm)	Weight (kg)	Dimension (L×W×H)(mm)	Weight (kg)
APD25BD-6	4M06G2D0/S	DSE6120	25	23	20	18.4	1696×892×1003	525	1980×950×1205	655
APD30BD-6	4M06G4D0/S	DSE6120	30	27	24	21.6	1840×892×1073	600	2094×950×1359	720
APD42BD-6	4M06G6D0/S	DSE6120	42	38	33.6	30.4	1840×892×1107	610	2094×950×1359	730
APD49BD-6	4M06G8D0/S	DSE6120	49	45	39.2	36	1840×892×1107	610	2094×950×1359	730
APD66BD-6	4M06G10D0/S	DSE6120	66	60	52.8	48	2015×950×1315	830	2282×1008×1532	1050
APD85BD-6	4M10G2D0/S	DSE6120	85	78	68	62.4	2348×1004×1275	1170	2600×1058×1681	1420
APD103BD-6	4M10G4D0/S	DSE6120	103	94	82.4	75.2	2348×1004×1275	1165	2600×1058×1681	1415
APD125BD-6	4M10G6D0/S	DSE6120	125	112	100	89.6	2348×1004×1331	1230	2600×1058×1681	1480
APD165BD-6	6M11G2D0/S	DSE6120	165	150	132	120	2641×1100×1465	1970	3276×1156×1858	2450
APD200BD-6	6M11G4D0/S	DSE6120	200	180	160	144	2641×1100×1465	1970	3276×1156×1858	2450
APD255BD-6	6M16G2D0/S	DSE7320	255	230	204	184	2750×1300×1753	2100	3933×1356×2176	2900
APD310BD-6	6M16G6D0/S	DSE7320	310	284	248	227.2	2795×1300×1753	2200	3933×1356×2176	3000

Dimension & Weight are suitable for 220/127V genset, Please contact AKSA for data under other voltages if needed.
Standby power (ESP) and Prime power (PRP) Ratings are in accordance with ISO8528-1.
Please contact Aksa for product details and the latest configurations.



**Aksa Power Generation
BD Series Generator Sets**

60Hz, 1800rpm, 0.8PF

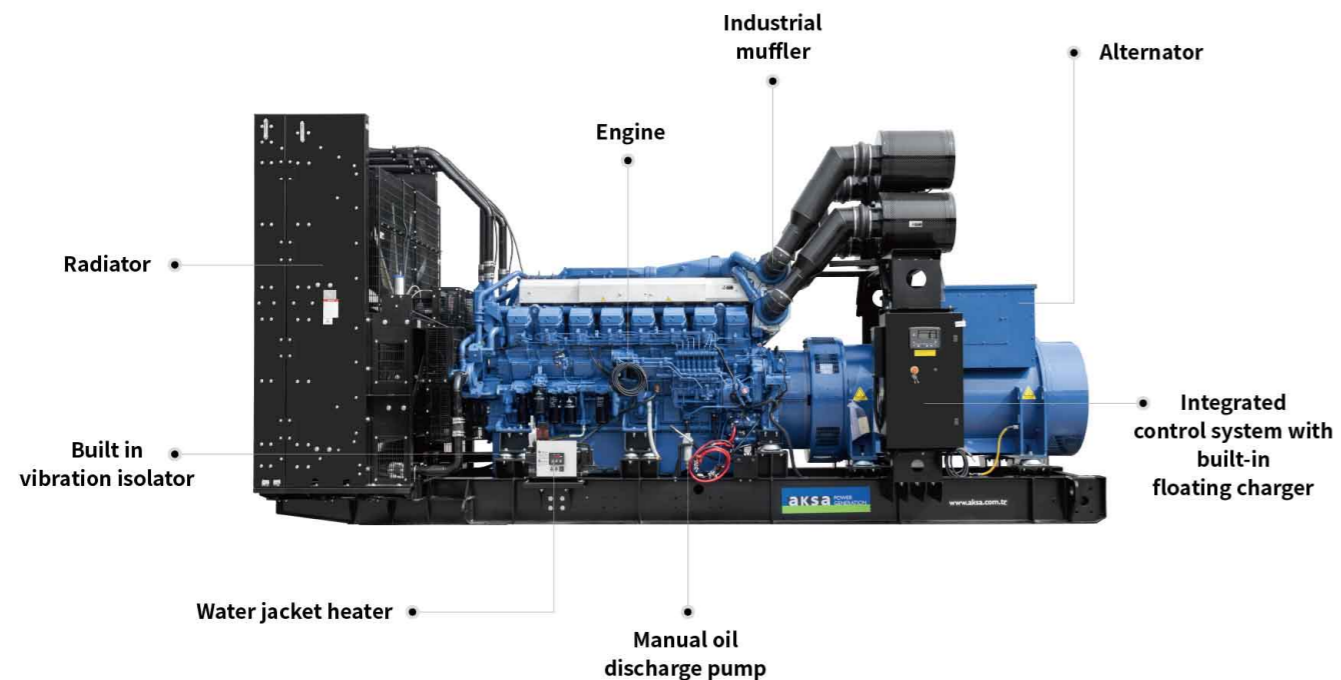
Genset Model	Engine Model	Controller	Genset Power				Open Genset		Canopy Genset	
			Standby (kVA)	Prime (kVA)	Standby (kW)	Prime (kW)	Dimension (L×W×H)(mm)	Weight (kg)	Dimension (L×W×H)(mm)	Weight (kg)
APD390BD-6	6M16G308/6	DSE7320	390	355	312	284	2834×1300×1798	2655	3933×1356×2176	3405
APD485BD-6	6M21G390/6	DSE7320	485	438	388	350.4	2994×1300×1808	2900	3933×1356×2172	3600
APD572BD-6	6M21G460/6	DSE7320	572	500	457.6	400	3111×1550×2038	3170	4435×1606×2559	4250
APD645BD-6	8M21G520/6	DSE7320	645	586	516	468.8	3205×1550×1998	3950	5813×1606×2652	5680
APD710BD-6	6M33G575/6	DSE7320	710	645	568	516	3500×1550×2245	5300	5813×1606×2652	6330
APD825BD-6	6M33G660/6	DSE7320	825	750	660	600	3500×1550×2245	5450	5813×1606×2652	6480
APD880BD-6	12M26G704/6	DSE7320	880	800	704	640	4273×2204×2294	7000	5485×2260×2655	8250
APD1000BD-6	12M26G800/6	DSE7320	1000	900	800	720	4273×2204×2294	7000	5485×2260×2655	8250
APD1125BD-6	12M26G900/6	DSE7320	1125	1000	900	800	4273×2204×2294	7250	5485×2260×2655	8500
APD1250BD-6	12M33G1000/6	DSE7320	1250	1125	1000	900	4772×1970×2552	8300	7528×2302×3420	11600
APD1420BD-6	12M33G1100/6	DSE7320	1420	1290	1136	1032	4772×1970×2552	8500	7528×2302×3420	12300

Dimension & Weight are suitable for 220/127V genset, Please contact AKSA for data under other voltages if needed.
Standby power (ESP) and Prime power (PRP) Ratings are in accordance with ISO8528-1.
Please contact Aksa for product details and the latest configurations.

Aksa Power Generation Data Center Generator Set

60Hz Data center generator set configuration		
	Items	Configuration
Engine	Engine	●
	Redundant starter motor, Fuel-water separator	○
Alternator	Single bearing, insulation/temperature rise class H/H , measuring CT, AVR, Protection class IP23	●
	Differential protection CTs, Anti condensation heater, Winding and bearing temperature sensor	○
Electrical system	Control Panel, Control module, JW heater, Battery charger	●
	RTD expansion module, Differential protection relay, Battery	○
	Sync. system and switchgears	○
Cooling system	Radiator	●
Baseframe and AVM	Baseframe, Vibration isolator	●
Exhaust system	Silencer, Flex pipe	●
Container	Container and related configurations, Testing and certification	○
Accessories	Oil, Coolant	○

Note: “●” is standard, “○” is optional



Aksa Power Generation Data Center Generator Set

60Hz Data center generator set**		
Genset Model	DCP Rating (kW)	DCP Rating (kVA)
AC500-6	360	450
AC626-6	448	560
AC750-6	544	680
AC1013-6	732	915
AC1149-6	828	1035
AC1269-6	916	1145
AC1575-6	1108	1385
AC1894-6	1264	1580
AC2500-6	1800	2250
AC3438-6	2500	3125
AUDC400-6*	360	450
AUDC500-6*	448	560
AUDC600-6*	545	681
AUDC800-6*	725	906
AUDC1000-6*	900	1125
AUDC1250-6*	1120	1400
AUDC1500-6*	1360	1700
AUDC1600-6*	1460	1825
AUDC2000-6*	1800	2250
AUDC2250-6*	2000	2500
AUDC2500-6*	2300	2875

Data Center Power (DCP) Rating is in accordance with ISO8528-1.

Compliant with EPA emission certification*.

The low voltage range of the generator set is 208V-480V, and the high voltage range is 3.3kV-13.8kV. Different configuration at different voltage ranges**.

Please consult AKSA for detailed configurations.

Special Models



Containerized gensets



Lighting towers



Rental pack gensets



Portable gensets

Reference Global Project

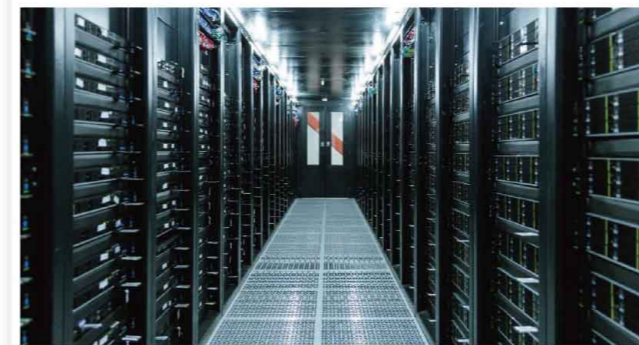
Istanbul Airport Project



Malaysia Intel Pelican Data Center Project



Indonesia National Research and Innovation Agency(BRIN) Data Center Project



Philippines Power Plant Project



Pakistan China Mobile Project



Myanmar CP Group Animal Husbandry Project



Reference Domestic Projects

Hangzhou Olympic Center Project



Southwest (Gui'an) Cloud Computing Big Data Center Project



Sir Run Run Shaw Hospital of Zhejiang University Project



Sichuan-Tibet Railway Project



Dongguan Hilton Hotel Project



Congo Golden Dragon Creek Copper Mine Project



CERTIFICATES



*TLC

*Uptime Institute Letter

GB/T2820 Reviser

High-Tech Enterprise



ISO9001



ISO14001



ISO45001



ISO10002



CE



UL2200



TSE-ISO8528-5

Certificate with * is suitable for data centers