



**aksa** POWER  
GENERATION

## Akxa Generator Sets-50Hz

**Akxa Power Generation (China) Co., Ltd**

Add: No.19 Tongjiang North Road,Changzhou New District, Changzhou / China

Tel: +86(0)519 8515 0205

Web: [www.aksapowergen.com](http://www.aksapowergen.com)

Version 202512

AKSA reserves the right of final interpretation for all contents

Please contact AKSA for product details and the latest configurations



Official Website

## KAZANCI HOLDING

### KAZANCI HOLDING

Aksa is headquartered in Istanbul and belongs to the Kazanci Holding Group, which has a 60-year history and is renowned in Europe.

Aksa's business primarily covers power generation, energy, natural gas, electricity, agriculture and tourism. Aksa has approximately 15,000 employees worldwide and its global revenue reached 6.8 billion dollars.

**Global leading brand**

**Production bases located on three continents**

**Sell to 178 countries**



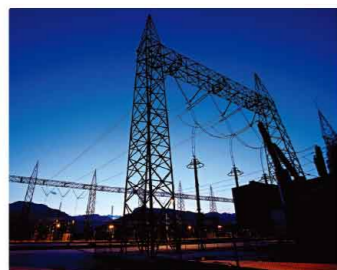
AKSA POWER GENERATION



AKSA ENERGY



AKSA NATURAL GAS



AKSA ELECTRICITY



AKSA AGRICULTURE



AKSA TOURISM

## AKSA POWER GENERATION GLOBAL BUSINESS



AKSA CHINA



AKSA TURKEY



AKSA USA



AKSA SPAIN

Aksa Power Generation has nearly half a century of experience and expertise in the global research & development, production, and after-sales service of generator sets, establishing itself as one of the world's leading generator brands.

With four production bases in China, Turkey, the USA, Spain, Aksa Power Generation manufactures diesel, gasoline, and natural gas generators, as well as lighting towers and marine generators, covering a power range from 1 kW to 2,750 kW. The company offers generator leasing services and power system integration for both temporary and permanent power stations, along with customized solutions for data centers and other industries. Aksa Power Generation holds international ISO certifications and complies with the most stringent product standards in regions including the EU, CIS, Africa, and China.

Aksa Power Generation has established wholly owned sales and service centers in key global markets, such as Turkey, China, Dubai, Singapore, Kazakhstan, Vietnam, and Algeria. Through a network of nearly 100 distribution centers, the company delivers high-quality products, services, and solutions to customers in 178 countries and regions worldwide.



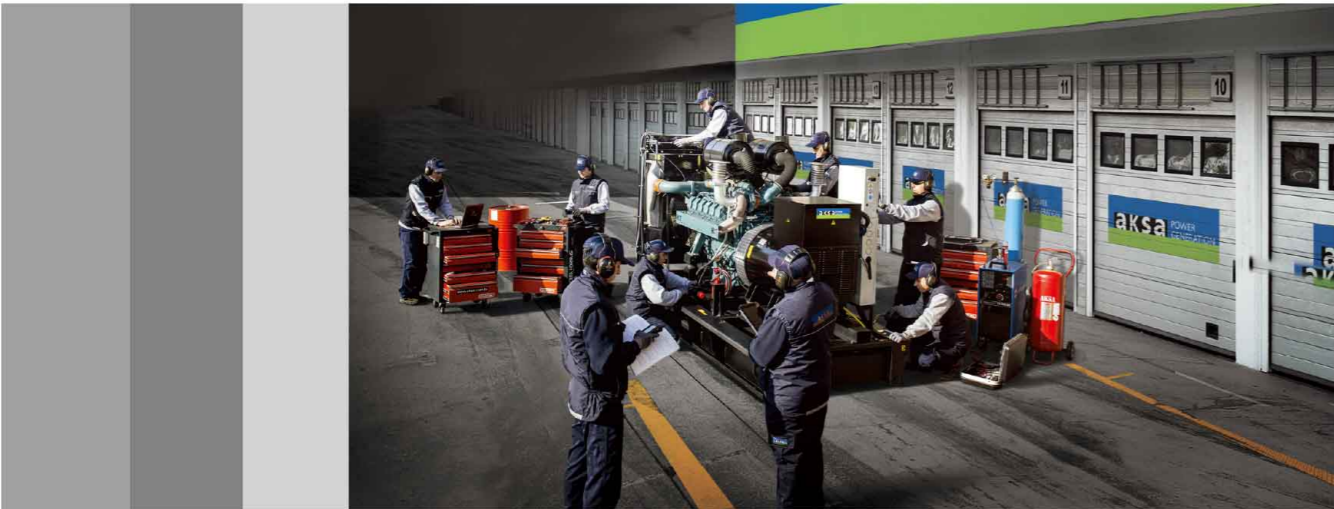
**AKSA GLOBAL SALES AND SERVICE SYSTEM**



**100+**  
Sales and Service  
Centers



**7 Days / 24 Hours**  
Response



**A WORLD'S LEADING GENERATOR SETS BRAND**



With this strong foundation, Akxa Power Generation delivers worldwide power solutions and ranks among the leading generator set brands in the industry.

In 2007, Akxa Power Generation invested in Changzhou, China, specializing in the production, research and development of generator sets and accessories. The company launched Phase I of its new production base in 2012 and expanded with Phase II in 2017. In 2025, it achieved another milestone as a solar photovoltaic project was successfully connected to the grid, providing clean electricity for operations of the production base while supporting energy conservation and emission reduction initiatives.

The base covers an area of 120,000 square meters, with an annual production capacity of 24,000 units. It has 16 modern testing rooms equipped with fully computerized control platforms, with a testing capacity of 25 MW. Currently, Akxa Power Generation has become one of the world's largest manufacturers of generator sets.

Akxa Power Generation provides the most effective solutions for the data center industry, continuously improving designs, products, and infrastructure to deliver the highest level of reliability for emergency power systems. While serving hundreds of countries worldwide, Akxa products and designs meet the needs of data center users. For data center power systems, Akxa Power Generation has obtained approval from the Uptime Institute, with 73 product models complying with Tier III and Tier IV standards.



## AKSA POWER GENERATION ASIA PACIFIC PRODUCTION BASE

The production base is equipped with advanced production lines, panel workshop, and sheet metal workshop. As well as the latest global testing equipment, the total testing capacity can reach 25MW.



Production base view



Warehouse



Production line

Area  
**120,000** m<sup>2</sup>

Annual capacity  
**24,000** units



Testing room



Sheet metal workshop



Panel workshop



### Aksa Power Generation A Series Generator Sets

50Hz, 1500rpm, 400/230V, 0.8PF

Genset Model	Engine Model	Controller	Genset Power				Open Genset		Canopy Genset	
			Standby (kVA)	Prime (kVA)	Standby (kW)	Prime (kW)	Dimension (L×W×H)(mm)	Weight (kg)	Dimension (L×W×H)(mm)	Weight (kg)
APD11A	A3CRX15	DSE6120	10.5	9.6	8.4	7.7	1400×760×864	370	1522×823×1127	540
APD13A	A4CRX19	DSE6120	12	11	9.6	8.8	1400×760×912	385	1672×823×1127	580
APD17A	A4CRX21	DSE6120	17	16	13.6	12.8	1400×760×912	405	1672×823×1127	600
APD25A	A4CRX27	DSE6120	25	22	20	17.6	1696×892×1003	635	1974×950×1200	810
APD35A	A4CRX36	DSE6120	35	32	28	25.6	1696×892×1028	700	1974×950×1200	825
APD44A	A4CRX37	DSE6120	44	40	35.2	32	1840×892×1119	720	2086×950×1360	960
APD55A	A4CRX36T	DSE6120	55	50	44	40	2015×950×1315	950	2275×1008×1537	1130
APD75A	A4CRX36TI	DSE6120	75	70	60	56	2015×950×1315	1030	2275×1008×1537	1190
APD110A	A4CRX46TI	DSE6120	110	100	88	80	2168×1004×1390	1200	2386×1058×1683	1450
APD135A	A4CRX48TI	DSE6120	135	122	108	97.6	2348×1004×1451	1350	2593×1058×1681	1665
APD165A	A6CRX65TI	DSE6120	165	150	132	120	2641×1100×1602	1610	3265×1163×1858	2000
APD200A	A6CRX71TI	DSE6120	200	182	160	145.6	2641×1100×1556	1710	3276×1156×1858	2150
APD220A	A6CRX72TI	DSE7320	220	200	176	160	2750×1300×1681	2000	3933×1356×2172	2700
APD275A	A6CRX97TI	DSE7320	275	250	220	200	2900×1400×2045	2645	3918×1463×2163	3080
APD450A	A6CRX116TI	DSE7320	440	400	352	320	3430×1550×2147	3150	4463×1606×2559	4020

Standby power (ESP) and Prime power (PRP) Ratings are in accordance with ISO8528-1. Please contact Aksa for product details and the latest configurations.



**Aksa Power Generation  
C Series Generator Sets**

50Hz, 1500rpm, 400/230V, 0.8PF

Genset Model	Engine Model	Controller	Genset Power				Open Genset		Canopy Genset	
			Standby (kVA)	Prime (kVA)	Standby (kW)	Prime (kW)	Dimension (L×W×H)(mm)	Weight (kg)	Dimension (L×W×H)(mm)	Weight (kg)
APD22C	4B3.9-G11	DSE6120	22	20	17.6	16	2015×950×1384	800	2282×1008×1532	1020
APD30C	4B3.9-G2	DSE6120	30	27	24	21.6	2015×950×1411	810	2282×1008×1532	1030
APD33C	4B3.9-G12	DSE6120	33	30	26.4	24	2015×950×1384	820	2273×1008×1537	1110
APD43C	4BT3.9-G2	DSE6120	43	39	34.4	31.2	2015×950×1411	900	2282×1008×1532	1120
APD66C	4BTA3.9-G2	DSE6120	66	60	52.8	48	2015×950×1411	1030	2282×1008×1532	1250
APD89C	4BTA3.9-G11	DSE6120	89	78	71.2	62.4	2015×950×1420	1080	2282×1008×1532	1300
APD110C	6BT5.9-G2	DSE6120	110	100	88	80	2348×1004×1409	1230	2600×1058×1681	1560
APD145C	6BTA5.9-G2	DSE6120	145	132	116	105.6	2350×1080×1645	1380	3417×1136×2022	1780
APD175C	6BTA5.9-G12	DSE6120	175	160	140	128	2367×1080×1731	1375	3417×1136×2022	1880
APD200C	6CTA8.3-G2	DSE6120	200	180	160	144	2336×1080×1742	1620	3417×1136×2022	2140
APD220C	6CTA8.3-G2	DSE7320	220	200	176	160	2750×1300×1784	2300	3963×1356×2171	2930
APD275C	6LTA8.9-G2	DSE7320	275	250	220	200	2750×1300×1784	2370	3963×1356×2171	3000
APD310C	6LTA9.5-G3	DSE7320	310	279	248	223.2	2840×1300×1845	2660	3963×1356×2171	3350
APD360C	6LTA9.5-G1	DSE7320	360	327	288	261.6	2840×1300×1845	2740	3963×1356×2171	3140
APD400CE	QSZ13-G6	DSE7320	400	360	320	288	3104×1550×2291	3250	4463×1606×2559	4150
APD415C	6ZTAA13-G3	DSE7320	415	380	332	304	3104×1550×2181	3210	4463×1606×2559	4110
APD450CE	QSZ13-G7	DSE7320	450	400	360	320	3180×1550×2291	3650	4463×1606×2559	4520
APD475C	6ZTAA13-G2	DSE7320	475	440	380	352	3180×1550×2181	3440	4463×1606×2559	4340
APD500C	QSZ13-G2	DSE7320	500	450	400	360	3180×1550×2181	3400	4463×1606×2559	4520
APD550C	QSZ13-G10	DSE7320	550	500	440	400	3260×1550×2148	3370	4813×1606×2620	4540

Standby power (ESP) and Prime power (PRP) Ratings are in accordance with ISO8528-1. Please contact Akxa for product details and the latest configurations.

**Aksa Power Generation  
C Series Generator Sets**

50Hz, 1500rpm, 400/230V, 0.8PF

Genset Model	Engine Model	Controller	Genset Power				Open Genset		Canopy Genset	
			Standby (kVA)	Prime (kVA)	Standby (kW)	Prime (kW)	Dimension (L×W×H)(mm)	Weight (kg)	Dimension (L×W×H)(mm)	Weight (kg)
AC550	QSK15-G8	DSE7320	550	500	440	400	3296×1550×2103	3790	4813×1606×2620	4910
AC551	KTA19-G4	DSE7320	550	500	440	400	3366×1550×2283	4220	4813×1606×2620	5000
AC700	VTA28-G5	DSE7320	700	638	560	510.4	3743×1550×2254	5660	5313×1606×2658	6840
AC825	VTA28-G6	DSE7320	825	-	660	-	3848×1550×2254	5800	5313×1606×2658	6980
AC880	QSK23-G3	DSE7320	880	800	704	640	4124×1911×2261	6500	6498×2293×2353	8800
AC1100	QST30-G4	DSE7320	1100	1000	880	800	4272×1950×2217	7100	7528×2302×2506	10700
AC1101	KTA38-G14	DSE7320	1100	1000	880	800	4370×2060×2168	8450	7528×2302×2506	11800
AC1250	KTA38-G9	DSE7320	1250	-	1000	-	4560×1850×2300	8600	7528×2302×3300	12500
AC1410	KTA50-G3	DSE7320	1410	1280	1128	1024	4916×1799×2219	9850	9037×2313×3135	14000
AC1675	KTA50-G8	DSE7320	1675	1400	1340	1120	5593×2100×2530	10500	9037×2313×3454	15000
AC1676	KTA50-GS8	DSE7320	1675	1500	1340	1200	5593×2100×2530	10500	9037×2313×3454	15000
AC2250	QSK60-G4	DSE7320	2250	2000	1800	1600	5960×2250×2541	14200	9000×2800×4394	18000
AC2500	QSK60-G8	DSE7320	2500	2250	2000	1800	5953×2380×3150	16000	9000×2800×4394	19200
AC2750	QSK60-G23	DSE7320	2750	2500	2200	2000	6086×2402×3150	15600	9037×2843×4374	20410
AC3000	QSK78-G9	DSE7320	3000	2750	2400	2200	7984×3118×3647	20000	11000×2800×5135	25500

Standby power (ESP) and Prime power (PRP) Ratings are in accordance with ISO8528-1. Please contact Akxa for product details and the latest configurations.

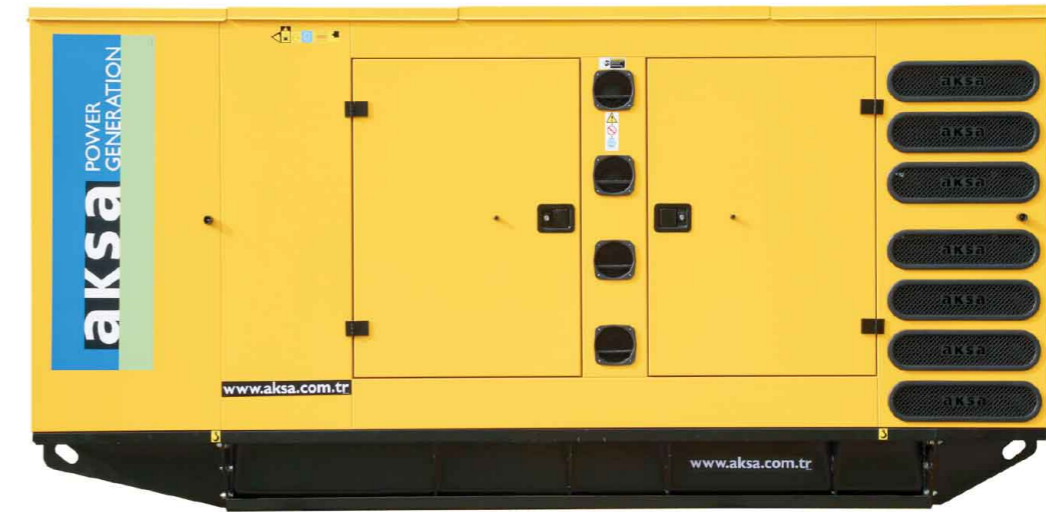


**Aksa Power Generation  
M Series Generator Sets**

50Hz, 1500rpm, 400/230V, 0.8PF

Genset Model	Engine Model	Controller	Genset Power				Open Genset		Canopy Genset	
			Standby (kVA)	Prime (kVA)	Standby (kW)	Prime (kW)	Dimension (L×W×H)(mm)	Weight (kg)	Dimension (L×W×H)(mm)	Weight (kg)
APD825M	S6R2-PTAA	DSE7320	825	750	660	600	4100×1800×2208	5650	5410×1856×2654	6900
APD850M	S12A2-PTA	DSE7320	853	775	682.4	620	4370×1970×2113	7250	6502×2294×2353	8700
APD1100M	S12H-PTA	DSE7320	1100	1025	880	820	4370×2100×2214	8600	7500×2300×3893	12000
APD1425M	S12R-PTA	DSE7320	1425	1290	1140	1032	4390×2040×2217	9300	7538×2343×3535	14000
APD1650M	S12R-PTAA2	DSE7320	1650	1500	1320	1200	4980×2192×3022	10450	9000×2800×4394	15000
APD1915M	S16R-PTA	DSE7320	1915	1750	1532	1400	5148×2245×2545	12600	9000×2800×4394	16000
APD2100M	S16R-PTA2	DSE7320	2100	1875	1680	1500	5223×2245×2962	12200	9000×2800×4394	16500
APD2250M	S16R-PTAA2	DSE7320	2250	2000	1800	1600	5700×2192×3390	13400	9000×2800×4690	17000
APD2500M	S16R2-PTAW	DSE7320	2500	2250	2000	1800	6146×2380×3392	14700	9633×2800×4498	19500
APD2750M*	S16R2-PTAW2-E	DSE7320	2750	2500	2200	2000	6840×2440×3283	18900	-	-

40°C radiator\*.  
Standby power (ESP) and Prime power (PRP) Ratings are in accordance with ISO8528-1.  
Please contact Aksa for product details and the latest configurations.

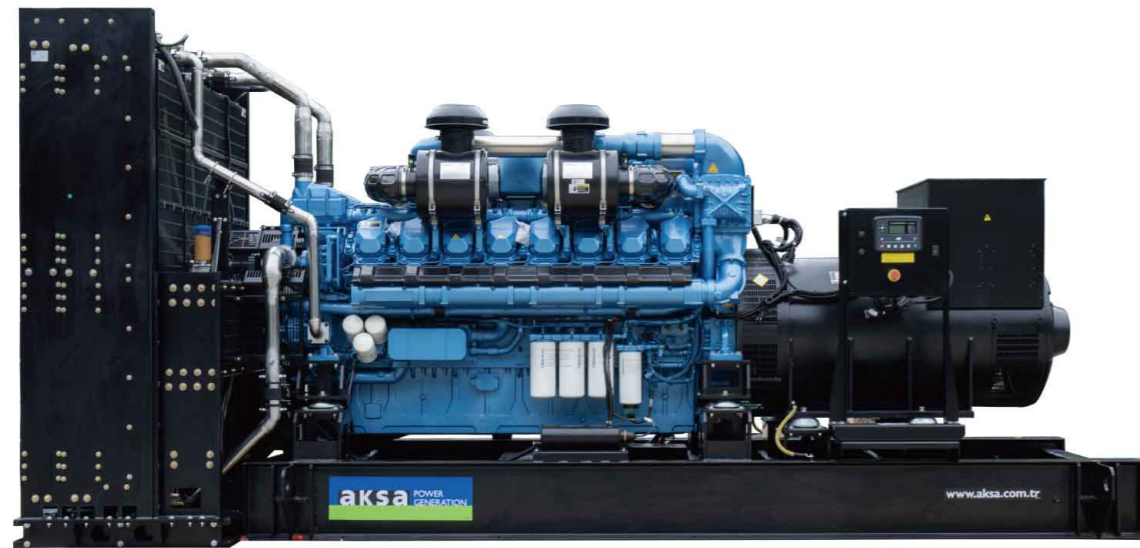


**Aksa Power Generation  
D Series Generator Sets**

50Hz, 1500rpm, 400/230V, 0.8PF

Genset Model	Engine Model	Controller	Genset Power				Open Genset		Canopy Genset	
			Standby (kVA)	Prime (kVA)	Standby (kW)	Prime (kW)	Dimension (L×W×H)(mm)	Weight (kg)	Dimension (L×W×H)(mm)	Weight (kg)
AD220	P086TI	DSE7320	220	200	176	160	2573×1150×1775	2020	3417×1206×2022	2590
AD275	P126TI	DSE7320	275	250	220	200	2847×1300×1661	2256	3963×1356×2171	2960
AD330	P126TI-II	DSE7320	330	300	264	240	2948×1300×1661	2256	3963×1356×2171	3100
AD410	DP126LB	DSE7320	410	375	328	300	3082×1550×1912	3000	4463×1606×2559	3780
AD490	P158LE	DSE7320	485	425	388	340	3035×1550×2068	2973	4463×1606×2559	4220
AD510	DP158LC	DSE7320	510	460	408	368	3035×1550×2060	3253	4463×1606×2559	4230
AD580	DP158LD	DSE7320	580	525	464	420	3035×1550×2060	3453	4463×1606×2559	4430
AD630	DP180LA	DSE7320	630	575	504	460	3205×1550×2048	3500	4813×1606×2620	5000
AD710	DP180LB	DSE7320	710	640	568	512	3268×1550×2048	3700	4813×1606×2620	4760
AD750	DP222LB	DSE7320	750	680	600	544	3470×1550×2303	4200	5313×1606×2658	5500
AD825	DP222LC	DSE7320	825	750	660	600	3528×1550×2303	4300	5313×1606×2658	5480
AD1015	DP222CC	DSE7320	1015	915	812	732	4200×2204×2257	5500	5513×2260×2655	6850

Standby power (ESP) and Prime power (PRP) Ratings are in accordance with ISO8528-1.  
Please contact Aksa for product details and the latest configurations.



**Aksa Power Generation  
BD Series Generator Sets**

50Hz, 1500rpm, 400/230V, 0.8PF

Genset Model	Engine Model	Controller	Genset Power				Open Genset		Canopy Genset	
			Standby (kVA)	Prime (kVA)	Standby (kW)	Prime (kW)	Dimension (L×W×H)(mm)	Weight (kg)	Dimension (L×W×H)(mm)	Weight (kg)
APD20BD	4M06G2D0/S	DSE6120	20	18	16	14.4	1696×892×1003	525	1980×950×1205	655
APD25BD	4M06G4D0/S	DSE6120	25	23	20	18.4	1840×892×1073	600	2094×950×1359	720
APD35BD	4M06G6D0/S	DSE6120	35	32	28	25.6	1840×892×1107	610	2094×950×1359	730
APD44BD	4M06G8D0/S	DSE6120	44	40	35.2	32	1840×892×1107	610	2094×950×1359	730
APD55BD	4M06G10D0/S	DSE6120	55	50	44	40	2015×950×1315	830	2282×1008×1532	1050
APD70BD	4M10G2D0/S	DSE6120	70	63	56	50.4	2348×1004×1275	1095	2600×1058×1681	1345
APD88BD	4M10G4D0/S	DSE6120	88	80	70.4	64	2348×1004×1275	1165	2600×1058×1681	1415
APD110BD	4M10G6D0/S	DSE6120	110	100	88	80	2348×1004×1331	1160	2600×1058×1681	1480
APD150BD	6M11G150/5	DSE6120	150	138	120	110.4	2641×1100×1465	1900	3276×1156×1858	2020
APD165BD	6M11G4D0/S	DSE6120	165	150	132	120	2641×1100×1465	1970	3276×1156×1858	2450
APD220BD	6M16G2D0/S	DSE7320	220	200	176	160	2750×1300×1753	2100	3933×1356×2176	2900
APD275BD	6M16G6D0/S	DSE7320	275	250	220	200	2794×1300×1753	2200	3933×1356×2176	3000
APD350BD	6M16G350/5	DSE7320	350	325	280	260	2834×1300×1798	2550	3933×1356×2176	3300
APD400BD	6M21G400/5	DSE7320	400	365	320	292	2994×1300×1808	2800	3933×1356×2172	3600
APD440BD	6M21G440/5	DSE7320	440	400	352	320	2994×1300×1808	2800	3933×1356×2172	3600

Standby power (ESP) and Prime power (PRP) Ratings are in accordance with ISO8528-1. Please contact Aksa for product details and the latest configurations.

**Aksa Power Generation  
BD Series Generator Sets**

50Hz, 1500rpm, 400/230V, 0.8PF

Genset Model	Engine Model	Controller	Genset Power				Open Genset		Canopy Genset	
			Standby (kVA)	Prime (kVA)	Standby (kW)	Prime (kW)	Dimension (L×W×H)(mm)	Weight (kg)	Dimension (L×W×H)(mm)	Weight (kg)
APD500BD	6M21G500/5	DSE7320	500	455	400	364	3053x1550x1923	3150	4435x1606x2559	4230
APD550BD	6M21G550/5	DSE7320	550	500	440	400	3111x1550x2040	3550	4435x1606x2559	4240
APD660BD	8M21G660/5	DSE7320	660	600	528	480	3205x1550x1998	4100	4813x1606x2620	5040
APD715BD	6M33G715/5	DSE7320	715	650	572	520	3582x1550x2225	4300	4813x1606x2620	5850
APD825BD	6M33G825/5	DSE7320	825	750	660	600	3667x1550x2245	5800	5313x1606x2658	7100
APD900BD	12M26G900/5	DSE7320	900	820	720	656	4273x2204x2294	7000	5485x2260x2655	8250
APD1020BD	12M26G1000/5	DSE7320	1020	925	816	740	4273x2204x2294	7000	5485x2260x2655	8250
APD1100BD	12M26G1100/5	DSE7320	1100	1000	880	800	4273x2204x2294	7250	5485x2260x2655	8500
APD1250BD	12M33G1250/5	DSE7320	1250	1125	1000	900	4772x1970x2552	8500	7528x2302x3420	11600
APD1400BD	12M33G1400/5	DSE7320	1400	1270	1120	1016	4772x1970x2552	8500	7528x2302x3420	12300
APD1650BD	12M33G1650/5	DSE7320	1650	1500	1320	1200	4772x1970x2552	8500	7528x2302x3420	12400
APD1925BD	16M33G1900/5	DSE7320	1925	1750	1540	1400	5704x2300x2664	13200	9000x2800x4650	18500
APD2000BD	16M33G2000/5	DSE7320	2000	1820	1600	1456	5704x2300x2664	13200	9000x2800x4650	18500
APD2250BD	16M33G2250/5	DSE7320	2250	-	1800	-	5704x2300x2664	13200	9000x2800x4650	18500
APD2500BD*	20M33G2500/5	DSE7320	2500	2250	2000	1800	6376×2230×2790	15200	9633×2800×4498	20800
APD2750BD*	12M55G2750/5	DSE7320	2750	2500	2200	2000	6000×2230×2981	19000	-	-

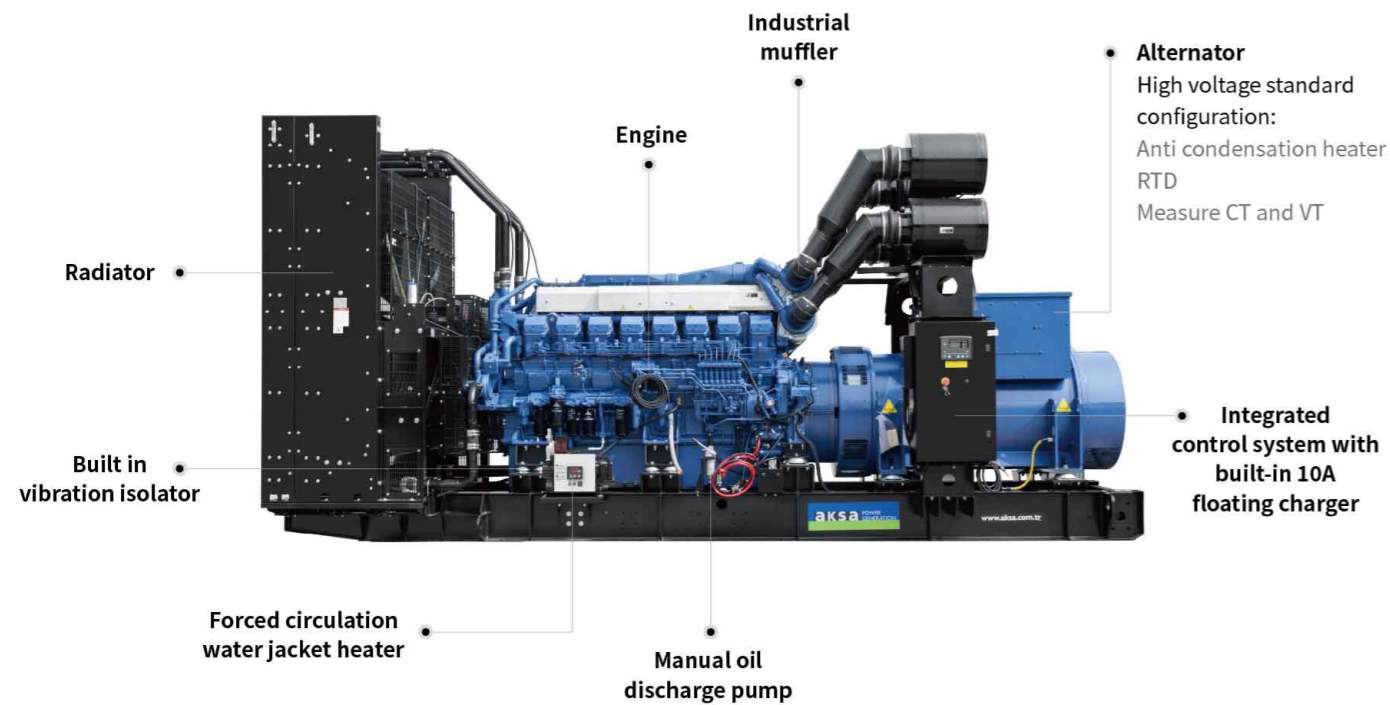
40°C radiator\*.

Standby power (ESP) and Prime power (PRP) Ratings are in accordance with ISO8528-1. Please contact Aksa for product details and the latest configurations.

## Aksa Power Generation High Voltage Generator Set

50Hz, 1500rpm, 10500V, 0.8PF			
Model	Engine Model	Prime Power (kW) DCP Rating (kW)	Alternator Model
AC2250-HV	QSK60-G4	1600	S9H1D-B
AC2500-HV	QSK60-G8	1800	S9H1D-C
AC2750-HV	QSK60-G23	2000	S9H1D-D
AC3000-HV	QSK78-G9	2100	S9H1D-E
APD2250M-HV	S16R-PTAA2	1600	S9H1D-B
APD2500M-HV	S16R2-PTAW	1800	S9H1D-C
APD2750M-HV	S16R2-PTAW2-E	2000	S9H1D-D

Data Center Power (DCP) and Prime Power Ratings are in accordance with ISO8528-1.



## Aksa Power Generation High Voltage Generator Set

50Hz, 1500rpm, 10500V, 0.8PF		
Generator set configuration		
Engine	Engine	●
	Redundant starter motor, Fuel-water separator	○
Alternator	Insulation/temperature rise class H/F, Measuring CT & VT, DVR	●
	Protection class IP23, Anti condensation heater, Winding and bearing temperature sensor	●
	Differential protection CTs	○
Electrical system	Control Panel, Control module, RTD expansion module, JW heater, Battery charger	●
	Differential protection relay, Battery	○
	Sync. system	○
Cooling system	Radiator	●
Baseframe and AVM	Baseframe, Vibration isolator	●
Exhaust system	Silencer, Flex pipe	●
Container	Container and related configurations, Testing and certification	○
Accessories	Oil, Coolant	○

50Hz, 1500rpm, 10500V, 0.8PF			
Container configuration			
40HC container	●	Customizable special container	○
Stainless steel door lock	●	Electric louvers	○
Residential Type silencer	●	Super silent sound attenuation system	○
Electrical, ventilation and sound attenuation system	●	Built in daily fuel tank system	○
		Automatic fire protection system	○
		2 hours fire resistance test	○

Note: "●" is standard, "○" is optional

### Special Models



Containerized gensets



Lighting towers



Rental pack gensets



Portable gensets

### Reference Global Project

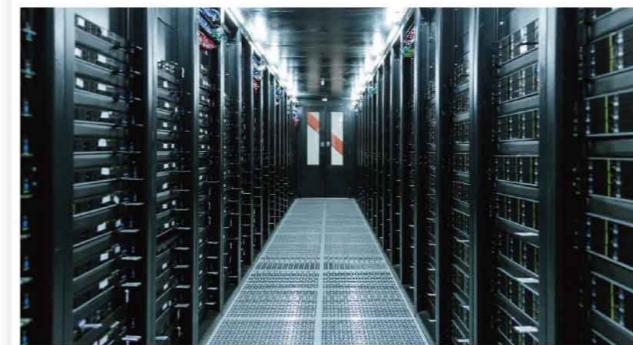
Istanbul Airport Project



Malaysia Intel Pelican Data Center Project



Indonesia National Research and Innovation Agency(BRIN) Data Center Project



Philippines Power Plant Project



Pakistan China Mobile Project



Myanmar CP Group Animal Husbandry Project



Reference Domestic Projects

Hangzhou Olympic Center Project



Southwest (Gui'an) Cloud Computing Big Data Center Project



Sir Run Run Shaw Hospital of Zhejiang University Project



Sichuan-Tibet Railway Project



Dongguan Hilton Hotel Project



Congo Golden Dragon Creek Copper Mine Project



CERTIFICATES



\*TLC

\*Uptime Institute Letter

GB/T2820 Reviser

High-Tech Enterprise



ISO9001

ISO14001

ISO45001

ISO10002



CE



UL2200



TSE-ISO8528-5

Certificate with \* is suitable for data centers